

BLEOMYCIN - bleomycin sulfate injection, powder, lyophilized, for solution
Fresenius Kabi USA, LLC

Bleomycin for Injection, USP

Rx only

BOXED WARNING

It is recommended that Bleomycin for Injection, USP be administered under the supervision of a qualified physician experienced in the use of cancer chemotherapeutic agents. Appropriate management of therapy and complications is possible only when adequate diagnostic and treatment facilities are readily available.

Pulmonary fibrosis is the most severe toxicity associated with bleomycin. The most frequent presentation is pneumonitis occasionally progressing to pulmonary fibrosis. Its occurrence is higher in elderly patients and in those receiving greater than 400 units total dose, but pulmonary toxicity has been observed in young patients and those treated with low doses.

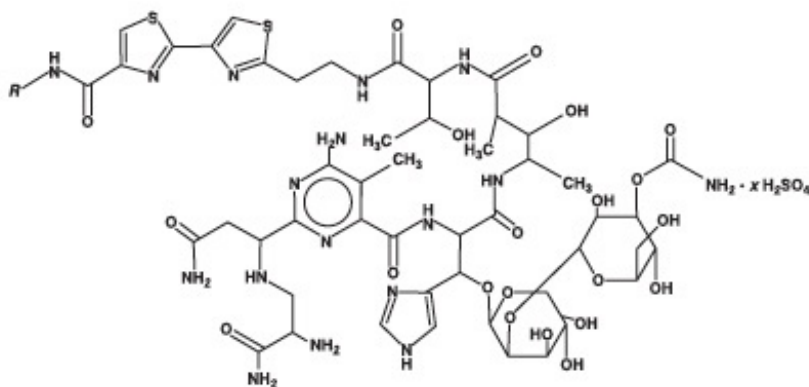
A severe idiosyncratic reaction consisting of hypotension, mental confusion, fever, chills, and wheezing has been reported in approximately 1% of lymphoma patients treated with bleomycin.

DESCRIPTION:

Bleomycin for Injection, USP is a mixture of cytotoxic glycopeptide antibiotics isolated from a strain of *Streptomyces verticillus*. It is freely soluble in water.

Bleomycin for Injection, USP is provided as a sterile lyophilized powder for reconstitution containing 15 units per vial and 30 units per vial, which are intended for intramuscular, intravenous, subcutaneous or intrapleural administration.

Its chemical name is N'-[3-(dimethylsulphonio)propyl]bleomycin-amide (bleomycin A₂) and N'-[4-(guaniodobutyl)]bleomycin-amide (bleomycin B₂).



(Main component: Bleomycin A₂, in which R is [CH₃]₂S⁺CH₂CH₂CH₂-)

Note: A unit of bleomycin is equal to the formerly used milligram activity. The term milligram activity is a misnomer and was changed to units to be more precise.

CLINICAL PHARMACOLOGY:

Mechanism of Action

Although the exact mechanism of action of bleomycin is unknown, available evidence indicates that the main mode of action is the inhibition of DNA synthesis with some evidence of lesser inhibition of RNA and protein synthesis.

Bleomycin is known to cause single, and to a lesser extent, double-stranded breaks in DNA. In *in vitro* and *in vivo* experiments, bleomycin has been shown to cause cell cycle arrest in G2 and in mitosis.

When administered into the pleural cavity in the treatment of malignant pleural effusion, bleomycin acts as a sclerosing agent.

Pharmacokinetics

Absorption

Bleomycin is rapidly absorbed following either intramuscular, subcutaneous, intraperitoneal, or intrapleural administration reaching peak plasma concentrations in 30 to 60 minutes. Systemic bioavailability of bleomycin is 100% and 70% following intramuscular and subcutaneous administrations, respectively, and 45% following both intraperitoneal and intrapleural administrations, compared to intravenous and bolus administration.

Following intramuscular doses of 1 to 10 units/m², both peak plasma concentration and AUC increased in proportion with the increase of dose.

Following intravenous bolus administration of 30 units of bleomycin to one patient with a primary germ cell tumor of the brain, a peak CSF level was 40% of the simultaneously-obtained plasma level and was attained in 2 hours after drug administration. The area under the bleomycin CSF concentration x time curve was 25% of the area of the bleomycin plasma concentration x time curve.

Distribution

Bleomycin is widely distributed throughout the body with a mean volume of distribution of 17.5 L/m² in patients following a 15 units/m² intravenous bolus dose. Protein binding of bleomycin has not been studied.

Metabolism

Bleomycin is inactivated by a cytosolic cysteine proteinase enzyme, bleomycin hydrolase. The enzyme is widely distributed in normal tissues with the exception of the skin and lungs, both targets of bleomycin toxicity. Systemic elimination of the drug by enzymatic degradation is probably only important in patients with severely compromised renal function.

Excretion

The primary route of elimination is via the kidneys. About 65% of the administered intravenous dose is excreted in urine within 24 hours. In patients with normal renal function, plasma concentrations of bleomycin decline biexponentially with a mean terminal half-life of 2 hours following intravenous bolus administration. Total body clearance and renal clearance averaged 51 mL/min/m² and 23 mL/min/m², respectively.

Following intrapleural administration to patients with normal renal function, a lower percentage of drug (40%) is recovered in the urine, as compared to that found in the urine after intravenous administration.

Special Populations

Age, Gender, and Race

The effects of age, gender, and race on the pharmacokinetics of bleomycin have not been evaluated.

Pediatric

Children of less than 3 years of age have higher total body clearance than in adults, 71 mL/min/m² versus 51 mL/min/m², respectively, following intravenous bolus administration. Children of more than 8 years of age have comparable clearance as in adults.

In children with normal renal function, plasma concentrations of bleomycin decline biexponentially as in adults. The volume of distribution and terminal half-life of bleomycin in children appears comparable to that in adults.

Renal Insufficiency

Renal insufficiency markedly alters bleomycin elimination. The terminal elimination half-life increases exponentially as the creatinine clearance decreases. Dosing reductions were proposed for patients with creatinine clearance values of <50 mL/min (see **PRECAUTIONS** and **DOSAGE AND ADMINISTRATION**).

Hepatic Insufficiency

The effect of hepatic insufficiency on the pharmacokinetics of bleomycin has not been evaluated.

Drug Interactions

Drugs that Can Affect Renal Clearance

Because bleomycin is eliminated predominantly through renal excretion, the administration of nephrotoxic drugs with bleomycin may affect its renal clearance. Specifically, in one report of 2 children receiving concomitant cisplatin with bleomycin, total body clearance of bleomycin decreased from 39 to 18 mL/min/m² as the cumulative dose of cisplatin exceeded 300 mg/m². Terminal half-life of bleomycin also increased from 4.4 to 6 hours. Fatal bleomycin pulmonary toxicity has been reported in a patient with unrecognized cisplatin-induced oliguric renal failure.

Clinical Studies

Malignant Pleural Effusion

The safety and efficacy of bleomycin 60 units and tetracycline (1 g) as treatment for malignant pleural effusion were evaluated in a multicenter, randomized trial. Patients were required to have cytologically positive pleural effusion, good performance status (0,1,2), lung re-expansion following tube thoracostomy with drainage rates of 100 mL/24 hours or less, no prior intrapleural therapy, no prior systemic bleomycin therapy, no chest irradiation, and no recent change in systemic therapy. Overall survival did not differ between the bleomycin (n=44) and tetracycline treatment (n=41) groups. Of patients evaluated within 30 days of instillation, the recurrence rate was 36% (10/28) with bleomycin and 67% (18/27) with tetracycline (p=0.023). Toxicity was similar between groups.

INDICATIONS AND USAGE:

Bleomycin for Injection, USP should be considered a palliative treatment. It has been shown to be useful in the management of the following neoplasms either as a single agent or in proven combinations with other approved chemotherapeutic agents:

Squamous Cell Carcinoma: Head and neck (including mouth, tongue, tonsil, nasopharynx, oropharynx, sinus, palate, lip, buccal mucosa, gingivae, epiglottis, skin, larynx), penis, cervix, and vulva. The response to Bleomycin for Injection is poorer in patients with previously irradiated head and neck cancer.

Lymphomas: Hodgkin's disease, non-Hodgkin's lymphoma.

Testicular Carcinoma: Embryonal cell, choriocarcinoma, and teratocarcinoma.

Bleomycin for Injection, USP has also been shown to be useful in the management of:

Malignant Pleural Effusion: Bleomycin for Injection is effective as a sclerosing agent for the treatment of malignant pleural effusion and prevention of recurrent pleural effusions.

CONTRAINDICATIONS:

Bleomycin for Injection is contraindicated in patients who have demonstrated a hypersensitive or an idiosyncratic reaction to it.

WARNINGS:

Patients receiving bleomycin must be observed carefully and frequently during and after therapy. It should be used with extreme caution in patients with significant impairment of renal function or compromised pulmonary function.

Pulmonary toxicities occur in 10% of treated patients. In approximately 1%, the nonspecific pneumonitis induced by bleomycin progresses to pulmonary fibrosis and death. Although this is age and dose related, the toxicity is unpredictable. Frequent roentgenograms are recommended (see **ADVERSE REACTIONS, Pulmonary**).

A severe idiosyncratic reaction (similar to anaphylaxis) consisting of hypotension, mental confusion, fever, chills, and wheezing has been reported in approximately 1% of lymphoma patients treated with bleomycin. Since these reactions usually occur after the first or second dose, careful monitoring is essential after these doses (see **ADVERSE REACTIONS, Idiosyncratic Reactions**).

Renal or hepatic toxicity, beginning as a deterioration in renal or liver function tests, have been reported. These toxicities may occur at any time after initiation of therapy.

Usage in Pregnancy

Pregnancy "Category D"

Bleomycin can cause fetal harm when administered to a pregnant woman. It has been shown to be teratogenic in rats. Administration of intraperitoneal doses of 1.5 mg/kg/day to rats (about 1.6 times the recommended human dose on a unit/m² basis) on days 6 to 15 of gestation caused skeletal malformations, shortened innominate artery and hydroureter. Bleomycin is abortifacient but not teratogenic in rabbits at intravenous doses of 1.2 mg/kg/day (about 2.4 times the recommended human dose on a unit/m² basis) given on gestation days 6 to 18.

There have been no studies in pregnant women. If bleomycin is used during pregnancy, or if the patient becomes pregnant while receiving this drug, the patient should be apprised of the potential hazard to the fetus. Women of childbearing potential should be advised to avoid becoming pregnant during therapy with bleomycin.

PRECAUTIONS:

General

Patients with creatinine clearance values of less than 50 mL/min should be treated with caution and their renal function should be carefully monitored during the administration of bleomycin. Lower doses of bleomycin may be required in these patients than those with normal renal function (see **CLINICAL PHARMACOLOGY** and **DOSAGE AND ADMINISTRATION**).

Carcinogenesis, Mutagenesis, Impairment of Fertility

The carcinogenic potential of bleomycin in humans is unknown. A study in F344-type male rats demonstrated an increased incidence of nodular hyperplasia after induced lung carcinogenesis by nitrosamines, followed by treatment with bleomycin. In another study where the drug was administered to rats by subcutaneous injection at 0.35 mg/kg weekly (3.82 units/m² weekly or about 30% at the recommended human dose), necropsy findings included dose-related injection site fibrosarcomas as well as various renal tumors. Bleomycin has been shown to be mutagenic both *in vitro* and *in vivo*. The effects of bleomycin on fertility have not been studied.

Pregnancy

Pregnancy “Category D”

(See **WARNINGS**.)

Nursing Mothers

It is not known whether the drug is excreted in human milk. Because many drugs are excreted in human milk and because of the potential for serious adverse reactions in nursing infants, it is recommended that nursing be discontinued by women receiving bleomycin therapy.

Pediatric Use

Safety and effectiveness of bleomycin in pediatric patients have not been established.

Geriatric Use

In clinical trials, pulmonary toxicity was more common in patients older than 70 years than in younger patients (see **BOXED WARNING**, **WARNINGS**, and **ADVERSE REACTIONS, Pulmonary**). Other reported clinical experience has not identified other differences in responses between elderly and younger patients, but greater sensitivity of some older individuals cannot be ruled out.

Bleomycin is known to be substantially excreted by the kidney, and the risk of toxic reactions to this drug may be greater in patients with impaired renal function. Because elderly patients are more likely to have decreased renal function, care should be taken in dose selection, and it may be useful to monitor renal function.

ADVERSE REACTIONS:

Pulmonary

The most serious side effects are pulmonary adverse reactions, occurring in approximately 10% of treated patients. The most frequent presentation is pneumonitis occasionally progressing to pulmonary fibrosis. Approximately 1% of patients treated have died of pulmonary fibrosis. Pulmonary toxicity is both dose and age related, being more common in patients over 70 years of age and in those receiving over 400 units total dose. This toxicity, however, is unpredictable and has been seen in young patients receiving low doses. Some published reports have suggested that the risk of pulmonary toxicity may be increased when bleomycin is used in combination with G-CSF (filgrastim) or other cytokines.

However, randomized clinical studies completed to date have not demonstrated an increased risk of pulmonary complications in patients treated with bleomycin and G-CSF.

Because of lack of specificity of the clinical syndrome, the identification of patients with pulmonary toxicity due to bleomycin has been extremely difficult. The earliest symptom associated with bleomycin pulmonary toxicity is dyspnea. The earliest sign is fine rales.

Radiographically, bleomycin-induced pneumonitis produces nonspecific patchy opacities, usually of the lower lung fields. The most common changes in pulmonary function tests are a decrease in total lung volume and a decrease in vital capacity. However, these changes are not predictive of the

development of pulmonary fibrosis.

The microscopic tissue changes due to bleomycin toxicity include bronchiolar squamous metaplasia, reactive macrophages, atypical alveolar epithelial cells, fibrinous edema, and interstitial fibrosis. The acute stage may involve capillary changes and subsequent fibrinous exudation into alveoli producing a change similar to hyaline membrane formation and progressing to a diffuse interstitial fibrosis resembling the Hamman-Rich syndrome. These microscopic findings are nonspecific; e.g., similar changes are seen in radiation pneumonitis and pneumocystic pneumonitis.

To monitor the onset of pulmonary toxicity, roentgenograms of the chest should be taken every 1 to 2 weeks (see **WARNINGS**). If pulmonary changes are noted, treatment should be discontinued until it can be determined if they are drug related. Recent studies have suggested that sequential measurement of the pulmonary diffusion capacity for carbon monoxide (DL_{CO}) during treatment with bleomycin may be an indicator of subclinical pulmonary toxicity. It is recommended that the DL_{CO} be monitored monthly if it is to be employed to detect pulmonary toxicities, and thus the drug should be discontinued when the DL_{CO} falls below 30% to 35% of the pretreatment value.

Because of bleomycin's sensitization of lung tissue, patients who have received bleomycin are at greater risk of developing pulmonary toxicity when oxygen is administered in surgery. While long exposure to very high oxygen concentrations is a known cause of lung damage, after bleomycin administration, lung damage can occur at lower concentrations that are usually considered safe. Suggested preventive measures are:

1. Maintain FIO_2 at concentrations approximating that of room air (25%) during surgery and the postoperative period.
2. Monitor carefully fluid replacement, focusing more on colloid administration rather than crystalloid.

Sudden onset of an acute chest pain syndrome suggestive of pleuropericarditis has been reported during bleomycin infusions. Although each patient must be individually evaluated, further courses of bleomycin do not appear to be contraindicated.

Pulmonary adverse events which may be related to the intrapleural administration of bleomycin have been reported.

Idiosyncratic Reactions

In approximately 1% of the lymphoma patients treated with bleomycin, an idiosyncratic reaction, similar to anaphylaxis clinically, has been reported. The reaction may be immediate or delayed for several hours, and usually occurs after the first or second dose (see **WARNINGS**). It consists of hypotension, mental confusion, fever, chills, and wheezing. Treatment is symptomatic including volume expansion, pressor agents, antihistamines, and corticosteroids.

Integument and Mucous Membranes

These adverse reactions have been reported in approximately 50% of treated patients. They consist of erythema, rash, striae, vesiculation, hyperpigmentation, and tenderness of the skin. Hyperkeratosis, nail changes, alopecia, pruritus, and stomatitis have also been reported. It was necessary to discontinue bleomycin therapy in 2% of treated patients because of these toxicities.

Scleroderma-like skin changes have been reported.

Skin toxicity is a relatively late manifestation usually developing in the second and third week of treatment after 150 to 200 units of bleomycin have been administered and appears to be related to the cumulative dose.

Intrapleural administration of bleomycin has been associated with local pain. Hypotension possibly requiring symptomatic treatment has been reported. Death has been reported in association with

bleomycin pleurodesis in seriously ill patients.

Other

Vascular toxicities coincident with the use of bleomycin in combination with other antineoplastic agents have been reported. The events are clinically heterogeneous and may include myocardial infarction, cerebrovascular accident, thrombotic microangiopathy (HUS), or cerebral arteritis. Various mechanisms have been proposed for these vascular complications. There are also reports of Raynaud's phenomenon occurring in patients treated with bleomycin in combination with vinblastine with or without cisplatin or, in a few cases, with bleomycin as a single agent. It is currently unknown if the cause of Raynaud's phenomenon in these cases is the disease, underlying vascular compromise, bleomycin, vinblastine, hypomagnesemia, or a combination of any of these factors.

Fever, chills, and vomiting have been reported. Anorexia and weight loss have been reported and may persist long after termination of this medication. Pain at tumor site, phlebitis, and other local reactions have been reported.

Malaise has been reported.

DOSAGE AND ADMINISTRATION:

Because of the possibility of an anaphylactoid reaction, lymphoma patients should be treated with 2 units or less for the first 2 doses. If no acute reaction occurs, then the regular dosage schedule may be followed.

The following dose schedule is recommended:

Squamous cell carcinoma, non-Hodgkin's lymphoma, testicular carcinoma— 0.25 to 0.5 units/kg (10 to 20 units/m²) given intravenously, intramuscularly, or subcutaneously weekly or twice weekly.

Hodgkin's Disease— 0.25 to 0.5 units/kg (10 to 20 units/m²) given intravenously, intramuscularly, or subcutaneously weekly or twice weekly. After a 50% response, a maintenance dose of 1 unit daily or 5 units weekly intravenously or intramuscularly should be given.

Pulmonary toxicity of Bleomycin for Injection, USP appears to be dose-related with a striking increase when the total dose is over 400 units. Total doses over 400 units should be given with great caution.

Note: When Bleomycin for Injection, USP is used in combination with other antineoplastic agents, pulmonary toxicities may occur at lower doses.

Improvement of Hodgkin's disease and testicular tumors is prompt and noted within 2 weeks. If no improvement is seen by this time, improvement is unlikely. Squamous cell cancers respond more slowly, sometimes requiring as long as 3 weeks before any improvement is noted.

Malignant Pleural Effusion— 60 units administered as a single dose bolus intrapleural injection (see **ADMINISTRATION, Intrapleural**).

Use in Patients with Renal Insufficiency

The following dosing reductions are proposed for patients with creatinine clearance (CrCL) values of less than 50 mL/min:

Patient CrCL (mL/min)	Bleomycin for Injection, USP Dose (%)

50 and above	100
40 to 50	70
30 to 40	60
20 to 30	55
10 to 20	45
5 to 10	40

CrCL can be estimated from the individual patient's measured serum creatinine (Scr) values using the Cockcroft and Gault formula:

Males CrCL = $[\text{weight} \times (140 - \text{Age})] / (72 \times \text{Scr})$

Females CrCL = $0.85 \times [\text{weight} \times (140 - \text{Age})] / (72 \times \text{Scr})$

Where CrCL in mL/min/1.73 m², weight in kg, age in years, and Scr in mg/dL.

ADMINISTRATION:

Bleomycin for Injection may be given by the intramuscular, intravenous, subcutaneous, or intrapleural routes.

Administration Precautions

Caution should be exercised when handling Bleomycin for Injection. Procedures for proper handling and disposal of anticancer drugs should be utilized. Several guidelines on this subject have been published.¹⁻⁴ To minimize the risk of dermal exposure, always wear impervious gloves when handling vials containing Bleomycin for Injection. If Bleomycin for Injection contacts the skin, immediately wash the skin thoroughly with soap and water. If contact with mucous membranes occurs, the membranes should be flushed immediately and thoroughly with water. More information is available in the references listed below.

Intramuscular or Subcutaneous

The Bleomycin for Injection 15 units vial should be reconstituted with 1 to 5 mL of Sterile Water for Injection, USP, Sodium Chloride for Injection, 0.9%, USP, or Sterile Bacteriostatic Water for Injection, USP. The Bleomycin for Injection 30 units vial should be reconstituted with 2 to 10 mL of the above diluents.

Intravenous

The contents of the 15 units or 30 units vial should be dissolved in 5 mL or 10 mL, respectively, of Sodium Chloride for Injection, 0.9%, USP, and administered slowly over a period of 10 minutes.

Intrapleural

Sixty units of Bleomycin for Injection are dissolved in 50 to 100 mL Sodium Chloride for Injection,

0.9%, USP, and administered through a thoracostomy tube following drainage of excess pleural fluid and confirmation of complete lung expansion. The literature suggests that successful pleurodesis is, in part, dependent upon complete drainage of the pleural fluid and re-establishment of negative intrapleural pressure prior to instillation of a sclerosing agent. Therefore, the amount of drainage from the chest tube should be as minimal as possible prior to instillation of Bleomycin for Injection. Although there is no conclusive evidence to support this contention, it is generally accepted that chest tube drainage should be less than 100 mL in a 24-hour period prior to sclerosis. However, Bleomycin for Injection instillation may be appropriate when drainage is between 100 to 300 mL under clinical conditions that necessitate sclerosis therapy. The thoracostomy tube is clamped after Bleomycin for Injection instillation. The patient is moved from the supine to the left and right lateral positions several times during the next four hours. The clamp is then removed and suction re-established. The amount of time the chest tube remains in place following sclerosis is dictated by the clinical situation.

The intrapleural injection of topical anesthetics or systemic narcotic analgesia is generally not required. Parenteral drug products should be inspected visually for particulate matter and discoloration prior to administration, whenever solution and container permit.

HOW SUPPLIED:

Bleomycin for Injection, USP is available as follows:

Product No.	NDC No.	
103610	63323-136-10	15 units per vial, individually packaged.
103720	63323-137-20	30 units per vial, individually packaged.

Stability

The sterile powder is stable under refrigeration 2°C to 8°C (36°F to 46°F) and should not be used after the expiration date is reached.

Bleomycin for Injection should not be reconstituted or diluted with D₅W or other dextrose containing diluents. When reconstituted in D₅W and analyzed by HPLC, Bleomycin for Injection demonstrates a loss of A₂ and B₂ potency that does not occur when Bleomycin for Injection is reconstituted in Sodium Chloride for Injection, 0.9%, USP.

Bleomycin for Injection is stable for 24 hours at room temperature in Sodium Chloride.

The container closure is not made with natural rubber latex.

REFERENCES:

1. NIOSH Alert: Preventing occupational exposures to antineoplastic and other hazardous drugs in healthcare settings. 2004. U.S. Department of Health and Human Services, Public Health Service, Centers for Disease Control and Prevention, National Institute for Occupational Safety and Health, DHHS (NIOSH) Publication No. 2004-165.
2. OSHA Technical Manual, TED 1-0.15A, Section VI: Chapter 2. Controlling occupational exposure to hazardous drugs. OSHA, 1999. http://www.osha.gov/dts/osta/otm/otm_vi/otm_vi_2.html
3. American Society of Health-System Pharmacists. ASHP guidelines on handling hazardous drugs. *Am J Health-Syst Pharm.* 2006;63:1172-1193.
4. Polovich M, White JM, Kelleher LO, eds. 2005. Chemotherapy and biotherapy guidelines and recommendations for practice. 2nd ed. Pittsburgh, PA: Oncology Nursing Society.



www.fresenius-kabi.us

45998F

Revised: November 2016

PACKAGE LABEL - PRINCIPAL DISPLAY - Bleomycin 15 units per vial Vial Label

Bleomycin for Injection, USP

15 units per vial

For intravenous, intramuscular, subcutaneous, or intrapleural use.

Caution: Cytotoxic - Special handling procedures.

Single Dose Vial

Rx only

Bleomycin
for Injection, USP

15 units per vial

For intravenous, intramuscular, subcutaneous, or intrapleural use.

Caution: Cytotoxic - Special handling procedures.

Single Dose Vial Rx only

Read circular for detailed indications, dosage and precautions.
Discard unused portion.
Store dry powder under refrigeration 2°C to 8°C (36°F to 46°F).

FRESENIUS KABI
Lake Zurich, IL 60047

402161G

LOT/EXP

3 NDC 63323-136-10 9

PACKAGE LABEL - PRINCIPAL DISPLAY - Bleomycin 15 units per vial Carton Panel

Bleomycin for Injection, USP

15 units per vial

For intravenous, intramuscular, subcutaneous, or intrapleural use.

Caution: Cytotoxic - Special handling procedures.

Rx only

Single Dose Vial

Bleomycin
for Injection, USP

15 units per vial

For intravenous, intramuscular, subcutaneous, or intrapleural use.

Caution: Cytotoxic - Special handling procedures.

Rx only
Single Dose Vial



PACKAGE LABEL - PRINCIPAL DISPLAY - Bleomycin 30 units per vial Vial Label

Bleomycin for Injection, USP

30 units per vial

For intravenous, intramuscular, subcutaneous, or intrapleural use.

Caution: Cytotoxic - Special handling procedures.

Single Dose Vial

Rx only

Bleomycin
for Injection, USP

30 units per vial

For intravenous, intramuscular, subcutaneous, or intrapleural use.

Caution: Cytotoxic - Special handling procedures.

Single Dose Vial

Rx only

Read circular for detailed indications, dosage and precautions.

Discard unused portion.

Store dry powder under refrigeration 2°C to 8°C (36°F to 46°F).



Lake Zurich, IL 60047

402162G

LOT/EXP



3 NDC 63323-137-20 5

PACKAGE LABEL - PRINCIPAL DISPLAY - Bleomycin 30 units per vial Carton Panel

Bleomycin for Injection, USP

30 units per vial

For intravenous, intramuscular, subcutaneous, or intrapleural use.

Caution: Cytotoxic - Special handling procedures.

Rx only
Single Dose Vial

Bleomycin

for Injection, USP

30 units per vial

For intravenous,
intramuscular, subcutaneous,
or intrapleural use.

**Caution: Cytotoxic -
Special handling
procedures.**

Rx only
Single Dose Vial



BLEOMYCIN

bleomycin sulfate injection, powder, lyophilized, for solution

Product Information

Product Type	HUMAN PRESCRIPTION DRUG	Item Code (Source)	NDC:63323-137
Route of Administration	INTRAMUSCULAR, INTRAVENOUS, SUBCUTANEOUS, INTRAPLEURAL		

Active Ingredient/Active Moiety

Ingredient Name	Basis of Strength	Strength
BLEOMYCIN SULFATE (UNII: 7DP3NTV15T) (BLEOMYCIN - UNII:40S1VHN69B)	BLEOMYCIN	30 [USP'U]

Packaging

#	Item Code	Package Description	Marketing Start Date	Marketing End Date
1	NDC:63323-137-20	1 in 1 CARTON	02/13/2009	
1		1 in 1 VIAL; Type 0: Not a Combination Product		

Marketing Information

Marketing Category	Application Number or Monograph Citation	Marketing Start Date	Marketing End Date
ANDA	ANDA065185	02/13/2009	

BLEOMYCIN

bleomycin sulfate injection, powder, lyophilized, for solution

Product Information

Product Type	HUMAN PRESCRIPTION DRUG	Item Code (Source)	NDC:63323-136
Route of Administration	INTRAMUSCULAR, INTRAVENOUS, SUBCUTANEOUS, INTRAPLEURAL		

Active Ingredient/Active Moiety

Ingredient Name	Basis of Strength	Strength
BLEOMYCIN SULFATE (UNII: 7DP3NTV15T) (BLEOMYCIN - UNII:40S1VHN69B)	BLEOMYCIN	15 [USP'U]

Packaging

#	Item Code	Package Description	Marketing Start Date	Marketing End Date
1	NDC:63323-136-10	1 in 1 CARTON	02/13/2009	
1		1 in 1 VIAL; Type 0: Not a Combination Product		

Marketing Information

Marketing Category	Application Number or Monograph Citation	Marketing Start Date	Marketing End Date
ANDA	ANDA065185	02/13/2009	

Labeler - Fresenius Kabi USA, LLC (608775388)

Establishment

Name	Address	ID/FEI	Business Operations
Fresenius Kabi USA, LLC		023648251	MANUFACTURE(63323-136, 63323-137)

Revised: 1/2017

Fresenius Kabi USA, LLC