

CAPASTAT SULFATE- capreomycin injection, powder, for solution
Akorn

CAPASTAT® SULFATE
CAPREOMYCIN FOR INJECTION, USP

For Intramuscular and Intravenous Infusion Only

NOT FOR PEDIATRIC USE

WARNINGS

The use of Capastat® Sulfate (Capreomycin for Injection, USP) in patients with renal insufficiency or preexisting auditory impairment must be undertaken with great caution, and the risk of additional cranial nerve VIII impairment or renal injury should be weighed against the benefits to be derived from therapy.

Refer to ANIMAL PHARMACOLOGY for additional information.

Since other parenteral antituberculosis agents (streptomycin, viomycin) also have similar and sometimes irreversible toxic effects, particularly on cranial nerve VIII and renal function, simultaneous administration of these agents with Capastat Sulfate is not recommended. Use with nonantituberculosis drugs (polymyxin A sulfate, colistin sulfate, amikacin, gentamicin, tobramycin, vancomycin, kanamycin, and neomycin) having ototoxic or nephrotoxic potential should be undertaken only with great caution.

Usage in Pregnancy: The safety of the use of Capastat Sulfate in pregnancy has not been determined.

Pediatric Usage: Safety and effectiveness in pediatric patients have not been established.

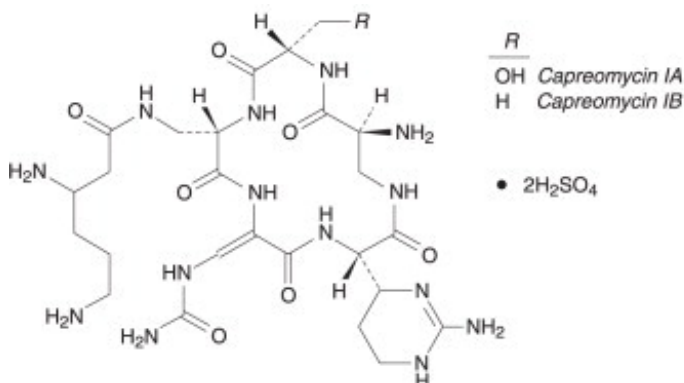
DESCRIPTION

Capastat Sulfate is a polypeptide antibiotic isolated from *Streptomyces capreolus*. It is a complex of 4 microbiologically active components which have been characterized in part; however, complete structural determination of all the components has not been established.

Capreomycin is supplied as the disulfate salt and is soluble in water. In complete solution, it is almost colorless.

Each vial contains the equivalent of 1 g capreomycin activity.

The structural formula is as follows:



CLINICAL PHARMACOLOGY

Human Pharmacology

Capreomycin is not absorbed in significant quantities from the gastrointestinal tract and must be administered parenterally. In 2 studies of 10 patients each, peak serum concentrations following 1 g of capreomycin given intramuscularly were achieved 1 to 2 hours after administration, and average peak levels reached were 28 and 32 µg/mL respectively (range, 20 to 47 µg/mL). Low serum concentrations were present at 24 hours. However, 1 g of capreomycin daily for 30 days or more produced no significant accumulation in subjects with normal renal function. Two patients with marked reduction of renal function had high serum concentrations 24 hours after administration of the drug. When a 1-g dose of capreomycin was given intramuscularly to normal volunteers, 52% was excreted in the urine within 12 hours.

Lehmann, et al, examined the pharmacokinetics of single dose capreomycin (1.0 g) administered intramuscularly and by intravenous infusion (1 hour) in 6 healthy volunteers. The area under the serum concentration versus time curve was similar for the two routes of administration. Capreomycin peak concentrations after intravenous infusion were $30 \pm 47\%$ higher than after intramuscular administration.^{1, 2}

Paper chromatographic studies indicated that capreomycin is excreted essentially unaltered. Urine concentrations averaged 1.68 mg/mL (average urine volume, 228 mL) during the 6 hours following a 1-g dose.

Microbiology

Capreomycin is active against strains of *Mycobacterium tuberculosis* found in humans.

Susceptibility Tests

The *in vitro* susceptibility of strains of *M. tuberculosis* to capreomycin varies with the media and techniques employed. In general, the minimum inhibitory concentrations for *M. tuberculosis* are lowest in liquid media that are free of egg protein (7H10 or Dubos) and range from 1 to 5 µg/mL when the indirect method is used. Comparable inhibitory concentrations are obtained when 7H10 agar is used for direct susceptibility testing. When indirect susceptibility tests are performed on standard tube slants with 7H10 media, susceptible strains are inhibited by 10 to 25 µg/mL capreomycin. Egg-containing media, such as Löwenstein-Jensen or ATS, require concentrations of 25 to 50 µg/mL to inhibit susceptible strains.

Cross-Resistance

Frequent cross-resistance occurs between capreomycin and viomycin. Varying degrees of cross-resistance between capreomycin and kanamycin and neomycin have been reported. No cross-resistance has been observed between capreomycin and isoniazid, aminosalicylic acid, cycloserine, streptomycin, ethionamide, or ethambutol.

INDICATIONS AND USAGE

Capastat Sulfate, which is to be used concomitantly with other appropriate antituberculosis agents, is indicated in pulmonary infections caused by capreomycin-susceptible strains of *M. tuberculosis* when the primary agents (isoniazid, rifampin, ethambutol, aminosalicylic acid, and streptomycin) have been ineffective or cannot be used because of toxicity or the presence of resistant tubercle bacilli.

Susceptibility studies should be performed to determine the presence of a capreomycin-susceptible strain of *M. tuberculosis*.

CONTRAINDICATION

Capastat Sulfate is contraindicated in patients who are hypersensitive to capreomycin.

PRECAUTIONS

General

Audiometric measurements and assessment of vestibular function should be performed prior to initiation of therapy with Capastat Sulfate and at regular intervals during treatment.

Renal injury, with tubular necrosis, elevation of the blood urea nitrogen (BUN) or serum creatinine, and abnormal urinary sediment, has been noted. Slight elevation of the BUN and serum creatinine has been observed in a significant number of patients receiving prolonged therapy. The appearance of casts, red cells, and white cells in the urine has been noted in a high percentage of these cases. Elevation of the BUN above 30 mg/100 mL or any other evidence of decreasing renal function with or without a rise in BUN levels calls for careful evaluation of the patient, and the dosage should be reduced or the drug completely withdrawn. The clinical significance of abnormal urine sediment and slight elevation in the BUN (or serum creatinine) observed during long-term therapy with Capastat Sulfate has not been established.

The peripheral neuromuscular blocking action that has been attributed to other polypeptide antibiotics (colistin sulfate, polymyxin A sulfate, paromomycin, and viomycin) and to aminoglycoside antibiotics (streptomycin, dihydrostreptomycin, neomycin, and kanamycin) has been studied with Capastat Sulfate. A partial neuromuscular blockade was demonstrated after large intravenous doses of Capastat Sulfate. This action was enhanced by ether anesthesia (as has been reported for neomycin) and was antagonized by neostigmine.

Caution should be exercised in the administration of antibiotics, including Capastat Sulfate, to any patient who has demonstrated some form of allergy, particularly to drugs.

Laboratory Tests

Regular tests of renal function should be made throughout the period of treatment, and reduced dosage should be employed in patients with known or suspected renal impairment.

Renal function studies should be made both before therapy with Capastat Sulfate is started and on a weekly basis during treatment.

Since hypokalemia, hypomagnesemia and hypocalcemia may occur during therapy, these serum electrolyte levels should be determined frequently.

Drug Interactions

For neuromuscular blocking action of this drug, *see* PRECAUTIONS, GENERAL.

Carcinogenesis, Mutagenesis, Impairment of Fertility

Studies have not been performed to determine potential for carcinogenicity, mutagenicity, or impairment of fertility.

Usage in Pregnancy — Pregnancy Category C

Capastat Sulfate has been shown to be teratogenic in rats when given in doses 3 1/2 times the human dose. There are no adequate and well-controlled studies in pregnant women. Capastat Sulfate should be used during pregnancy only if the potential benefit justifies the potential risk to the fetus (*see boxed WARNINGS and ANIMAL PHARMACOLOGY*).

Nursing Mothers

It is not known whether this drug is excreted in human milk. Because many drugs are excreted in human

milk, caution should be exercised when Capastat Sulfate is administered to a nursing woman.

Pediatric Use

Safety and effectiveness in pediatric patients have not been established (*see boxed WARNINGS*).

Geriatric Use

Clinical studies of Capastat Sulfate did not analyze the safety and efficacy of patients aged 65 and over to determine whether they respond differently from younger patients. Other reported clinical experience has not identified differences in responses between the elderly and younger patients. In general, dose selection for an elderly patient should be cautious, usually starting at the low end of the dosing range, reflecting the greater frequency of decreased hepatic, renal, or cardiac function, and of concomitant disease or other drug therapy.

Capastat Sulfate is known to be substantially excreted by the kidney (*see CLINICAL PHARMACOLOGY*), and the risk of toxic reactions to this drug may be greater in patients with impaired renal function. Because elderly patients are more likely to have decreased renal function, care should be taken in dose selection, and it may be useful to monitor renal function (*see PRECAUTIONS, Laboratory Tests*). Patients with reduced renal function should have dosage reduction based on creatinine clearance using the guidelines included in Table 1 (*see DOSAGE AND ADMINISTRATION*).

The geriatric population is also more likely to have impaired hearing at baseline. Audiometric measurements and assessment of vestibular function should be performed prior to initiation of therapy with Capastat Sulfate and at regular intervals during treatment (*see PRECAUTIONS, General*).

ADVERSE REACTIONS

Nephrotoxicity: In 36% of 722 patients treated with Capastat Sulfate, elevation of the BUN above 20 mg/100 mL has been observed. In many instances, there was also depression of PSP excretion and abnormal urine sediment. In 10% of this series, the BUN elevation exceeded 30 mg/100 mL.

Toxic nephritis was reported in 1 patient with tuberculosis and portal cirrhosis who was treated with Capastat Sulfate (1 g) and aminosalicylic acid daily for 1 month. This patient developed renal insufficiency and oliguria and died. Autopsy showed subsiding acute tubular necrosis.

Electrolyte disturbances including hypokalemia, hypomagnesemia and hypocalcemia, sometimes serious in nature, have been reported.

Ototoxicity: Subclinical auditory loss was noted in approximately 11% of 722 patients undergoing treatment with Capastat Sulfate. This was a 5- to 10-decibel loss in the 4000- to 8000-CPS range. Clinically apparent hearing loss occurred in 3% of the 722 subjects. Some audiometric changes were reversible. Other cases with permanent loss were not progressive following withdrawal of Capastat Sulfate.

Tinnitus and vertigo have occurred.

Liver: Serial tests of liver function have demonstrated a decrease in BSP excretion without change in AST (SGOT) or ALT (SGPT) in the presence of preexisting liver disease. Abnormal results in liver function tests have occurred in many persons receiving Capastat Sulfate in combination with other antituberculosis agents that also are known to cause changes in hepatic function. The role of Capastat Sulfate in producing these abnormalities is not clear; however, periodic determinations of liver function are recommended.

Blood: Leukocytosis and leukopenia have been observed. The majority of patients treated have had eosinophilia exceeding 5% while receiving daily injections of Capastat Sulfate. This has subsided with reduction of the Capastat Sulfate dosage to 2 or 3 g weekly.

Pain and induration at the injection site have been observed. Excessive bleeding at the injection site has been reported. Sterile abscesses have been noted. Rare cases of thrombocytopenia have been reported.

Hypersensitivity: Urticaria and maculopapular skin rashes associated in some cases with febrile reactions have been reported when Capastat Sulfate and other antituberculosis drugs were given concomitantly.

OVERDOSAGE

Signs and Symptoms

Nephrotoxicity following the parenteral administration of Capastat Sulfate is most closely related to the area under the curve of the serum concentration versus time graph. The elderly patient, patients with abnormal renal function or dehydration, and patients receiving other nephrotoxic drugs are at much greater risk for developing acute tubular necrosis.

Damage to the auditory and vestibular divisions of cranial nerve VIII has been associated with Capastat Sulfate given to patients with abnormal renal function or dehydration and in those receiving medications with additive auditory toxicities. These patients often experience dizziness, tinnitus, vertigo, and a loss of high-tone acuity.

Neuromuscular blockage or respiratory paralysis may occur following rapid intravenous infusion.

If capreomycin is ingested, toxicity would be unlikely because it is poorly absorbed (less than 1%) from an intact gastrointestinal system.

Hypokalemia, hypocalcemia, hypomagnesemia, and an electrolyte disturbance resembling Bartter's syndrome have been reported to occur in patients with capreomycin toxicity.

The subcutaneous median lethal dose in mice was 514 mg/kg.

Treatment

To obtain up-to-date information about the treatment of overdose, a good resource is your certified Regional Poison Control Center. Telephone numbers of certified poison control centers are listed in the *Physicians' Desk Reference (PDR)*. In managing overdose, consider the possibility of multiple drug overdoses, interaction among drugs, and unusual drug kinetics in your patient.

Protect the patient's airway and support ventilation and perfusion. Meticulously monitor and maintain, within acceptable limits, the patient's vital signs, blood gases, serum electrolytes, etc. Absorption of drugs from the gastrointestinal tract may be decreased by giving activated charcoal, which, in many cases, is more effective than emesis or lavage; consider charcoal instead of or in addition to gastric emptying. Repeated doses of charcoal over time may hasten elimination of some drugs that have been absorbed. Safeguard the patient's airway when employing gastric emptying or charcoal.

Patients who have received an overdose of capreomycin and have normal renal function should be carefully hydrated to maintain a urine output of 3 to 5 mL/kg/h. Fluid balance, electrolytes, and creatinine clearance should be carefully monitored.

Hemodialysis may be effectively used to remove capreomycin in patients with significant renal disease.

DOSAGE AND ADMINISTRATION

Capastat Sulfate may be administered intramuscularly or intravenously following reconstitution. Reconstitution is achieved by dissolving the vial contents (1 g) in 2 mL of 0.9% Sodium Chloride Injection or Sterile Water for Injection. Two to 3 minutes should be allowed for complete dissolution.

Intravenously — For intravenous infusion, reconstituted Capastat Sulfate should be diluted in 100 mL of 0.9% Sodium Chloride Injection and administered over 60 minutes.

Intramuscularly — Reconstituted Capastat Sulfate should be given by deep intramuscular injection into a large muscle mass, since superficial injection may be associated with increased pain and the development of sterile abscesses.

For administration of a 1-g dose, the entire contents of the vial should be given. For doses lower than 1 g, the following dilution table may be used.

DILUTION TABLE		
Diluent Added to 1-g, 10-mL Vial	Volume of Capastat Sulfate Solution	Concentration (Approx)
2.15 mL	2.85 mL	370 mg [*] /mL
2.63 mL	3.33 mL	315 mg [*] /mL
3.3 mL	4 mL	260 mg [*] /mL
4.3 mL	5 mL	210 mg [*] /mL

* Equivalent to capreomycin activity. Approximated concentration takes into account the retention volume.

The solution may acquire a pale straw color and darken with time, but this is not associated with loss of potency or the development of toxicity. After reconstitution, all solutions of Capastat Sulfate may be stored for up to 24 hours under refrigeration.

Capreomycin is always administered in combination with at least 1 other antituberculosis agent to which the patient's strain of tubercle bacilli is susceptible. The usual dose is 1 g daily (not to exceed 20 mg/kg/day) given intramuscularly or intravenously for 60 to 120 days, followed by 1 g by either route 2 or 3 times weekly. (Note — Therapy for tuberculosis should be maintained for 12 to 24 months. If facilities for administering injectable medication are not available, a change to appropriate oral therapy is indicated on the patient's release from the hospital.)

Patients with reduced renal function should have dosage reduction based on creatinine clearance using the guidelines included in Table 1. These dosages are designed to achieve a mean steady-state capreomycin level of 10 µg/mL.

Table 1. Estimated Dosages to Attain Mean Steady-State Serum Capreomycin Concentration of 10 µg/mL (Based on Creatinine Clearance)

CrCl (mL/min)	Capreomycin Clearance (L/kg/h x 10 ⁻²)	Half-life (hours)	Dose ^a (mg/kg) for the Following Dosing Intervals		
			24 h	48 h	72 h
0	0.54	55.5	1.29	2.58	3.87
10	1.01	29.4	2.43	4.87	7.30
20	1.49	20.0	3.58	7.16	10.7
30	1.97	15.1	4.72	9.45	14.2
40	2.45	12.2	5.87	11.7	
50	2.92	10.2	7.01	14.0	
60	3.40	8.8	8.16		
80	4.35	6.8	10.4 ^b		
100	5.31	5.6	12.7 ^b		
110	5.78	5.2	13.9 ^b		

^a For patients with renal impairment, initial maintenance dose estimates are given for optional dosing intervals; longer dosing intervals are expected to provide greater peak and lower trough serum capreomycin levels than shorter dosing intervals.

^b The usual dosage for patients with normal renal function is 1000 mg daily, not to exceed 20 mg/kg/day, for 60 to 120 days, then 1000 mg 2 to 3 times weekly.

1 VIAL NDC 17478-080-50

**CAPASTAT[®]
SULFATE**

**CAPREOMYCIN FOR
INJECTION, USP**

Equivalent to

1 g

Capreomycin Activity

R_x only

**FOR INTRAMUSCULAR AND
INTRAVENOUS INFUSION ONLY**

See literature for dosage.
To dissolve-Add 2 mL of Sterile Water
for Injection or 0.9% Sodium Chloride
Injection.

SHAKE WELL.

To dilute for intravenous use, see
accompanying literature.

Prior to Reconstitution: Store at
controlled room temperature 15° to
30°C (59° to 86°F).

After Reconstitution: May be stored
for up to 24 hours under refrigeration.
Lyophilized

Mfg. by: **Akorn, Inc.**,
Lake Forest, IL 60045 CTAAL Rev. 10/16



(01)00317478080503

LOT

EXP.

Carton Label Principal Display Panel Text:

1 VIAL NDC 17478-080-50

CAPASTAT[®]
SULFATE

CAPREOMYCIN FOR
INJECTION, USP

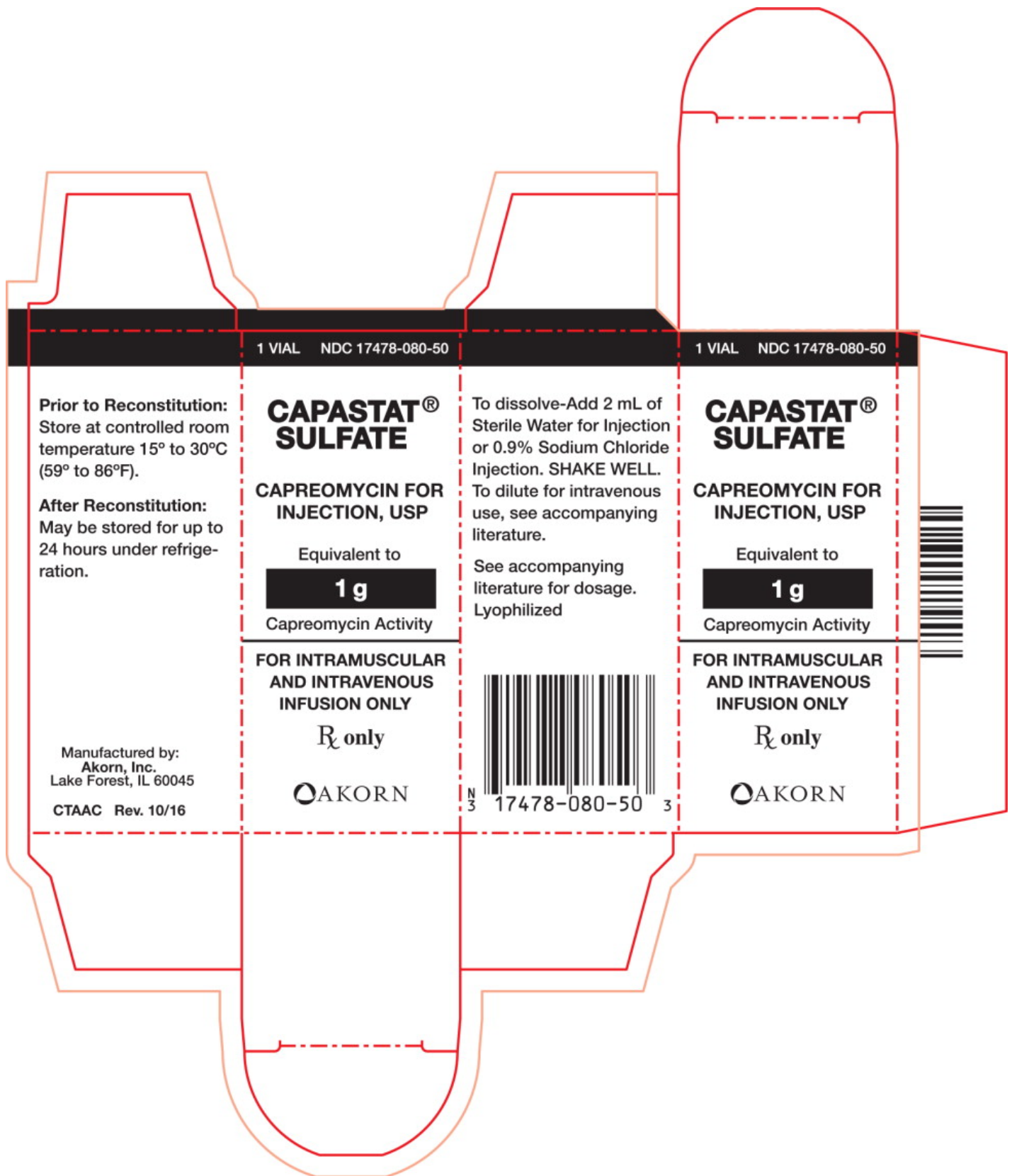
Equivalent to

1 g
Capreomycin Activity

FOR INTRAMUSCULAR
AND INTRAVENOUS
INFUSION ONLY

Rx only

Akorn Logo



CAPASTAT SULFATE

capreomycin injection, powder, for solution

Product Information

Product Type

HUMAN PRESCRIPTION DRUG

Item Code (Source)

NDC:17478-080

Route of Administration INTRAMUSCULAR, INTRAVENOUS

Active Ingredient/Active Moiety

Ingredient Name	Basis of Strength	Strength
capreomycin sulfate (UNII: 9H8D3J7V21) (capreomycin - UNII:232HYX66HC)	capreomycin	1 g

Packaging

#	Item Code	Package Description	Marketing Start Date	Marketing End Date
1	NDC:17478-080-50	1 in 1 CARTON; Type 0: Not a Combination Product	08/01/2009	

Marketing Information

Marketing Category	Application Number or Monograph Citation	Marketing Start Date	Marketing End Date
NDA	NDA050095	08/01/2009	

Labeler - Akorn (062649876)

Establishment

Name	Address	ID/FEI	Business Operations
Akorn, Inc		155135783	MANUFACTURE(17478-080) , REPACK(17478-080) , ANALYSIS(17478-080)

Revised: 11/2017

Akorn